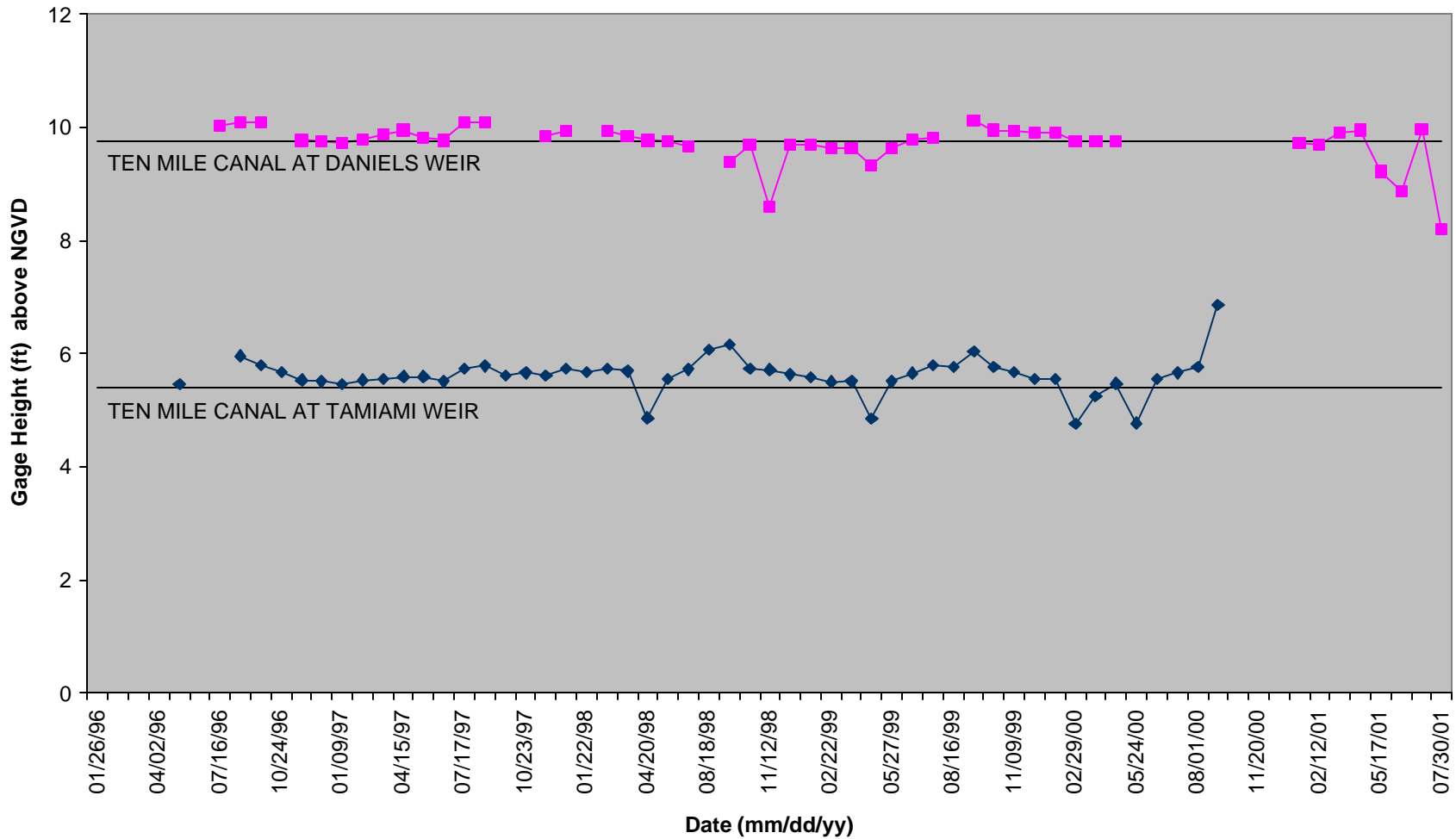
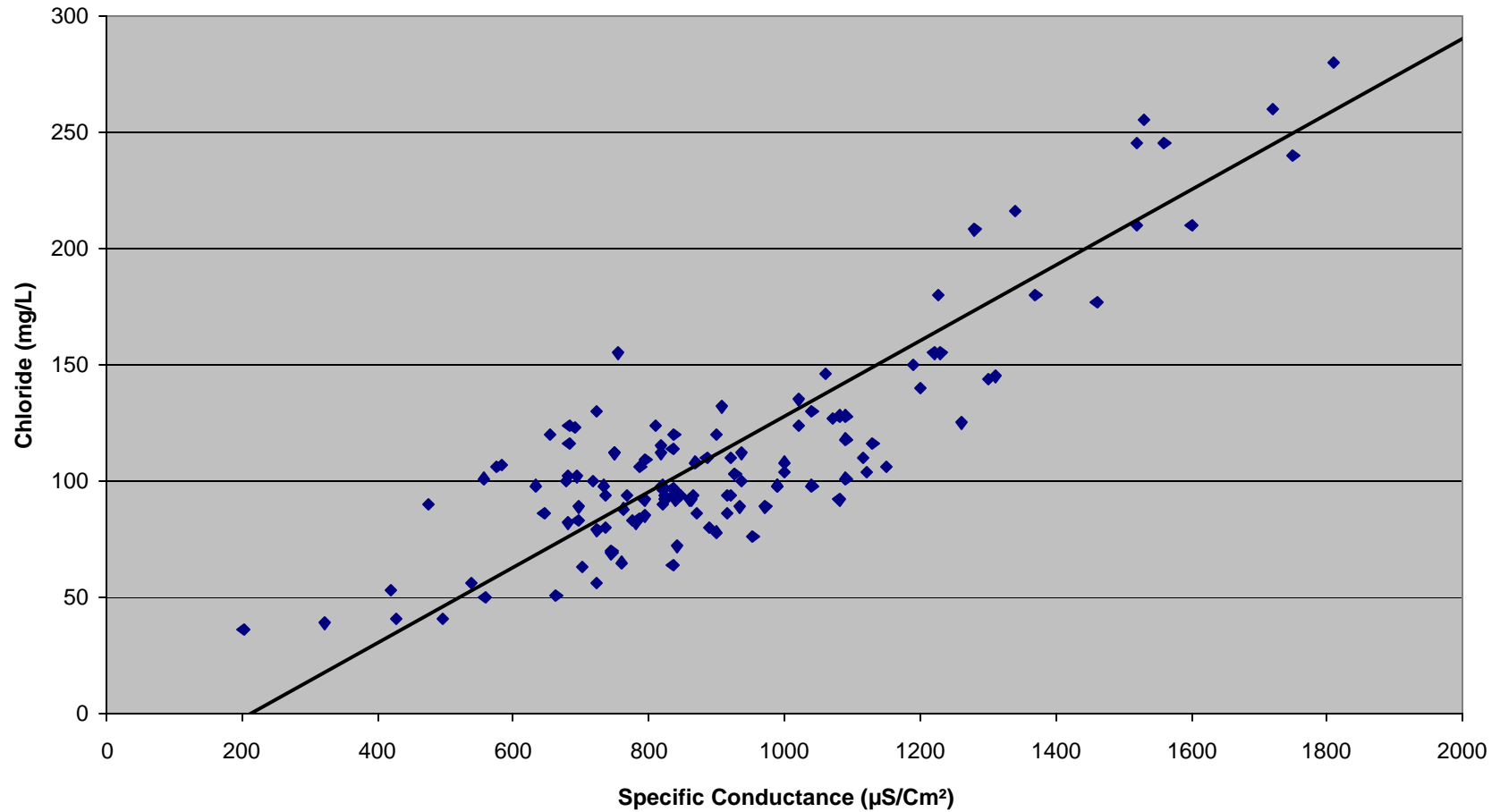


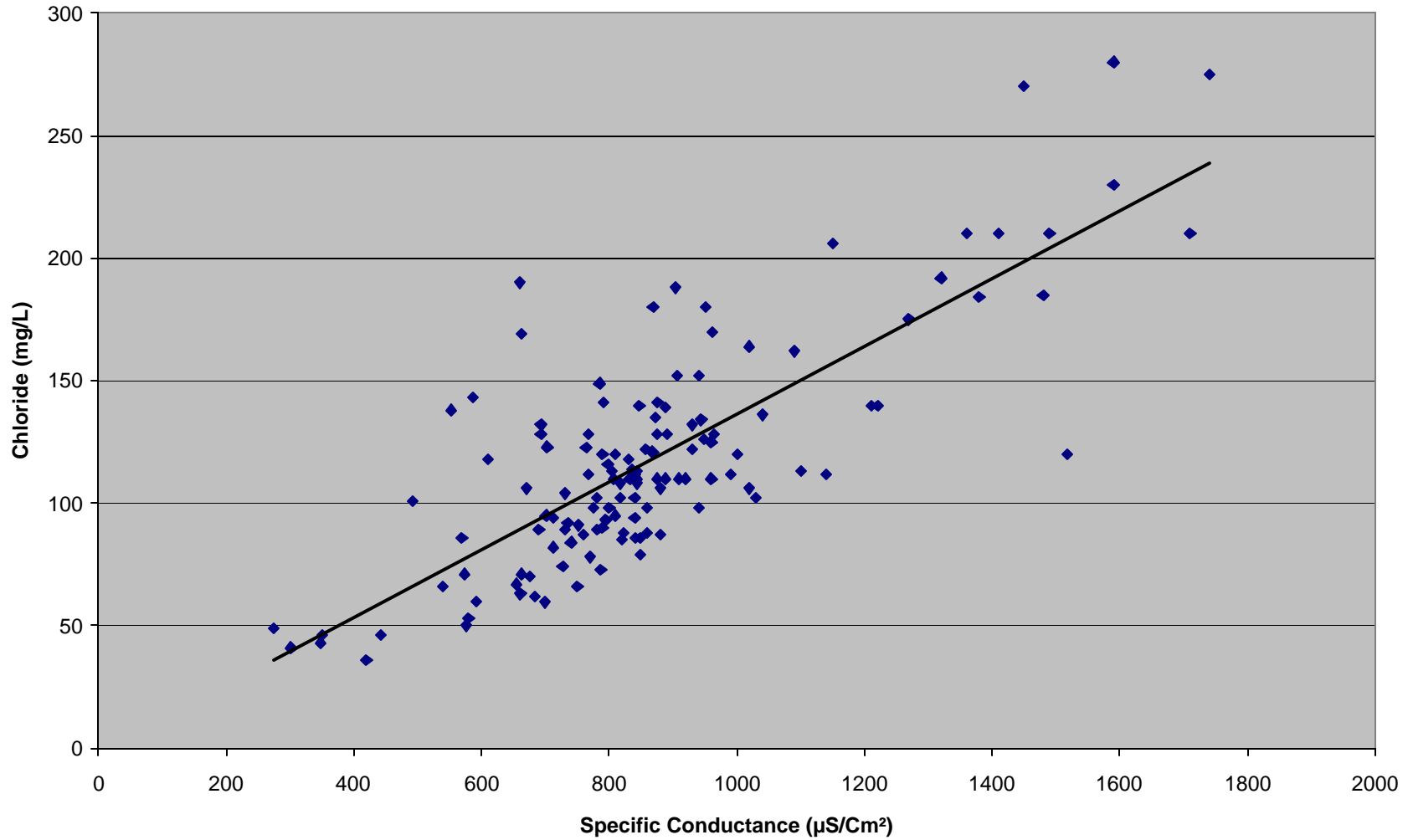
**Figure 2. Gage Height relative to Weir Crest Elevation:
Ten Mile Canal at Daniels Weir
and
Ten Mile Canal at Tamiami Weir**



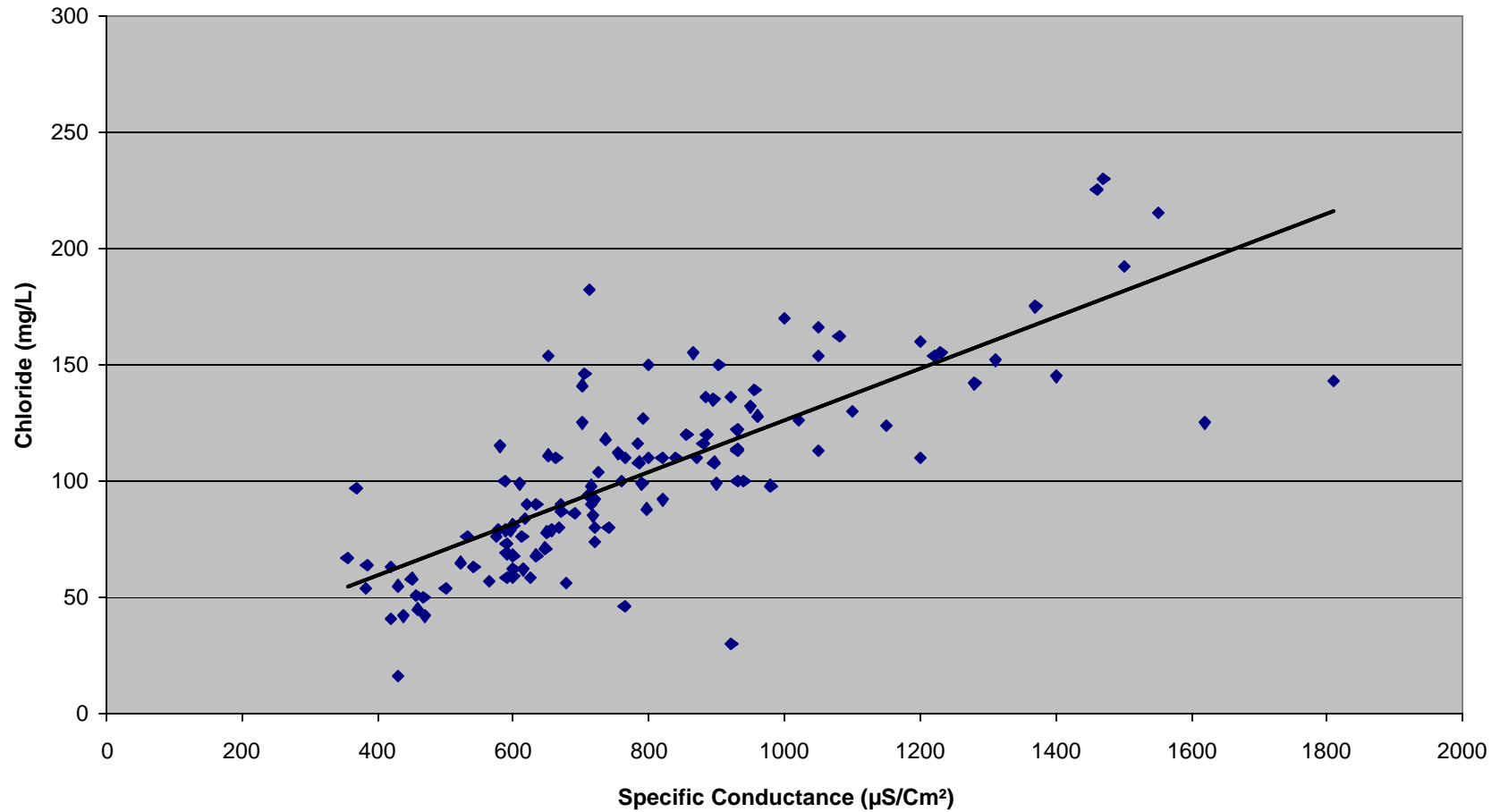
**Figure 3. Trendline: Specific Conductance vs. Concentration of Chloride:
Ten Mile Canal at Colonial Bridge
1990- 2000**



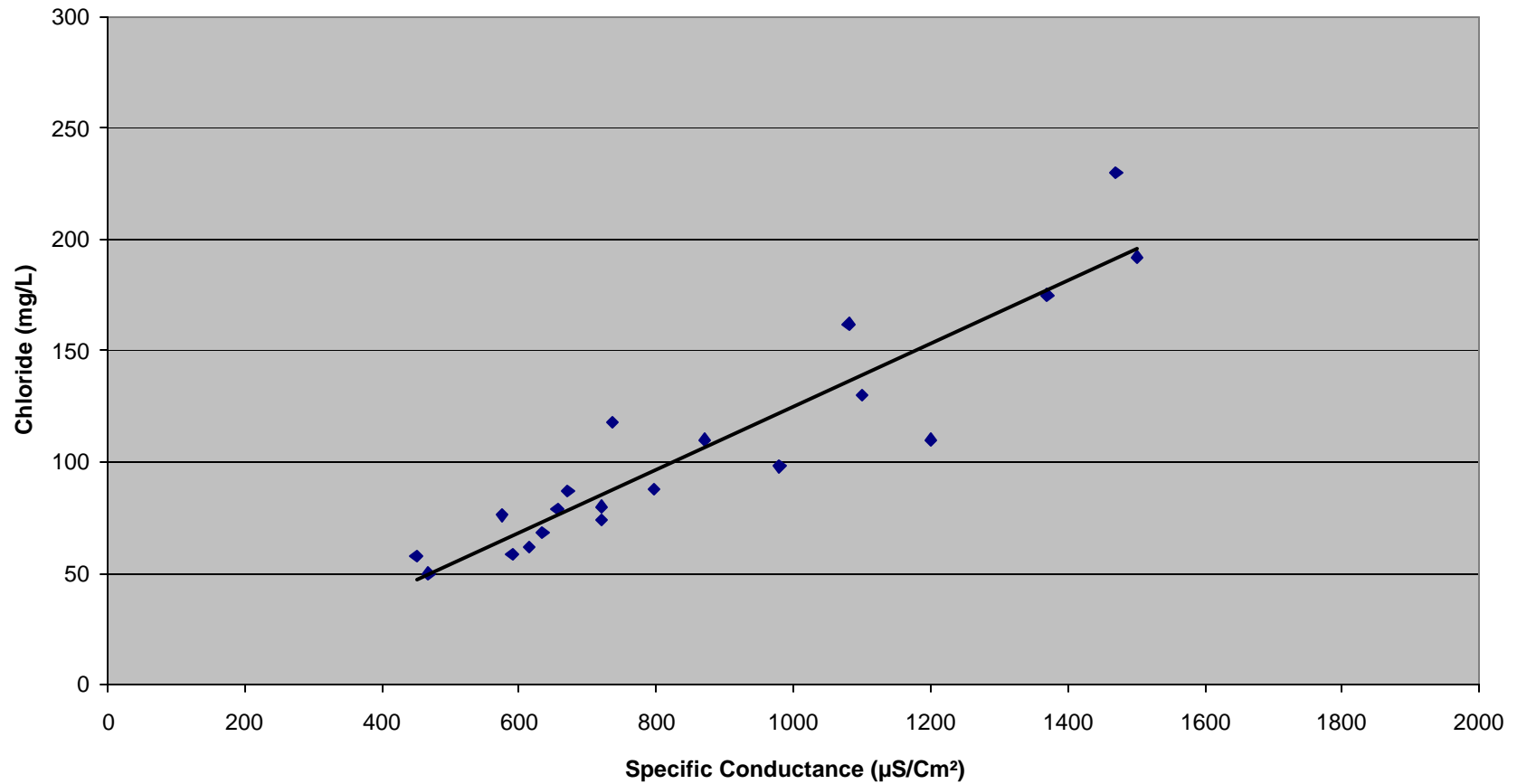
**Figure 4. Trendline: Specific Conductance vs. Concentration of Chloride:
Ten Mile Canal at Daniels Weir
1990 - 2000**



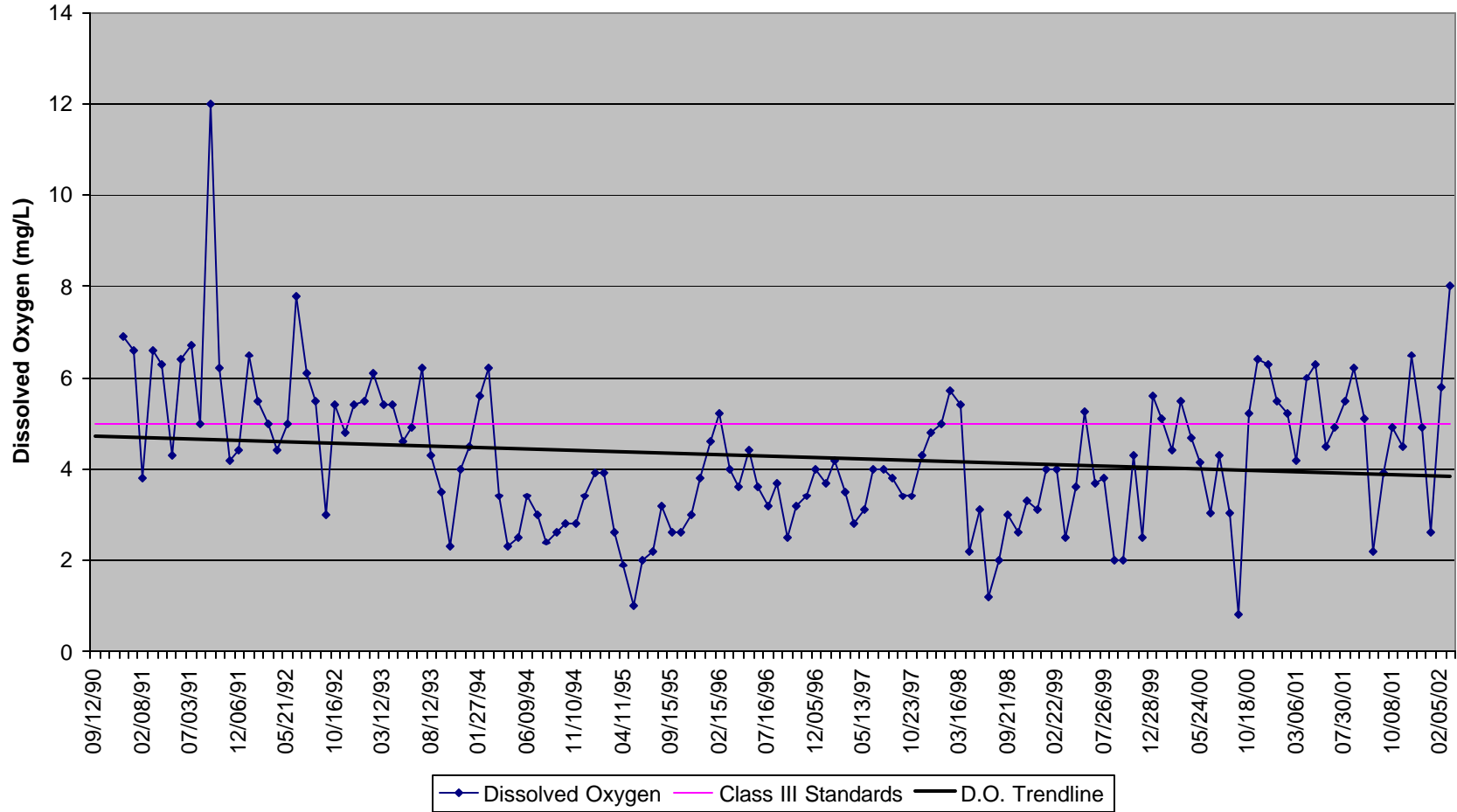
**Figure 5. Trendline of Specific Conductance vs. Concentration of Chloride:
Ten Mile Canal at Tamiami Weir
1990 - 2000**



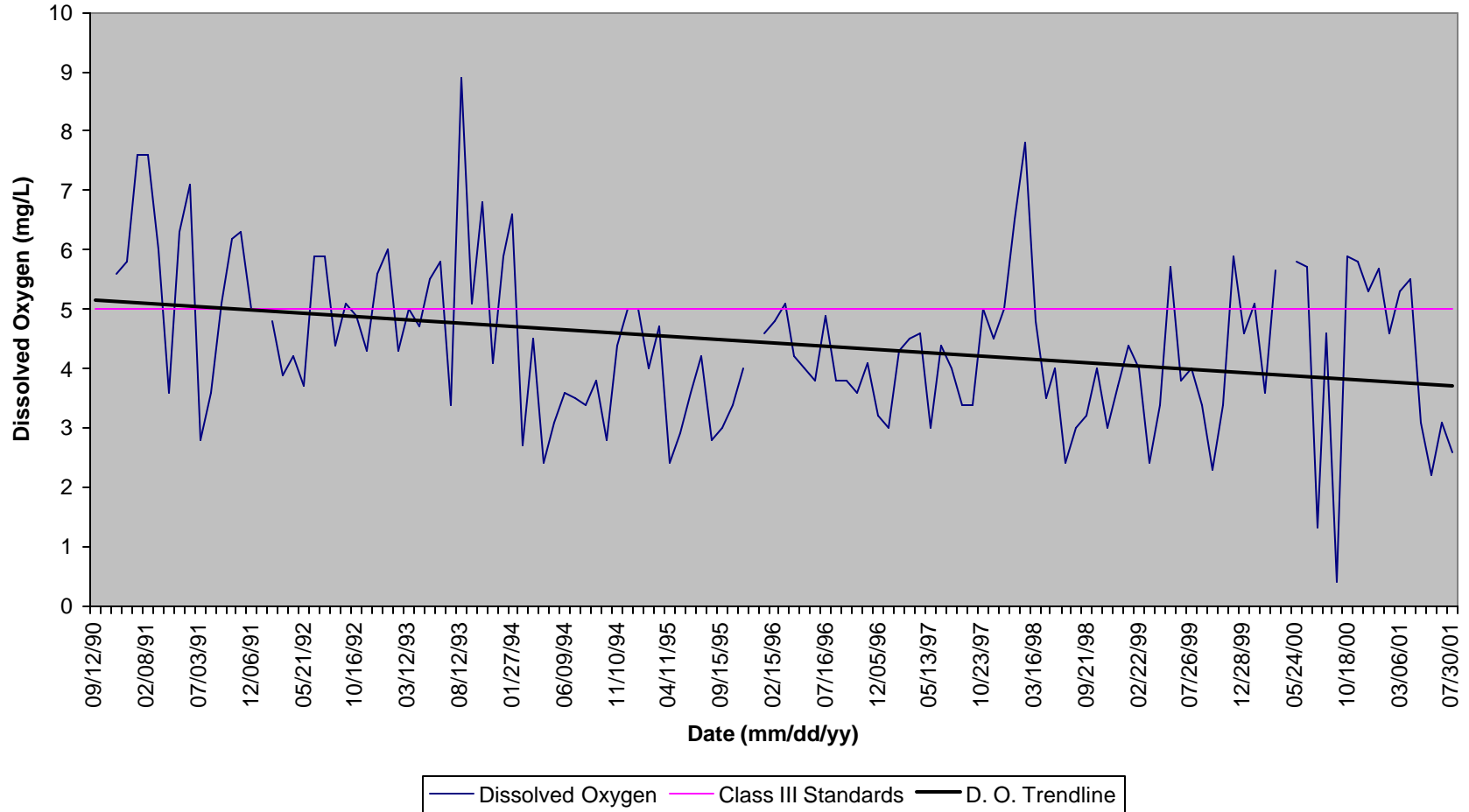
**Figure 6. Trendline of Specific Conductance vs. Concentration of Chloride following a Rainfall Event:
Ten Mile Canal at Tamiami Weir
1990 - 2000**



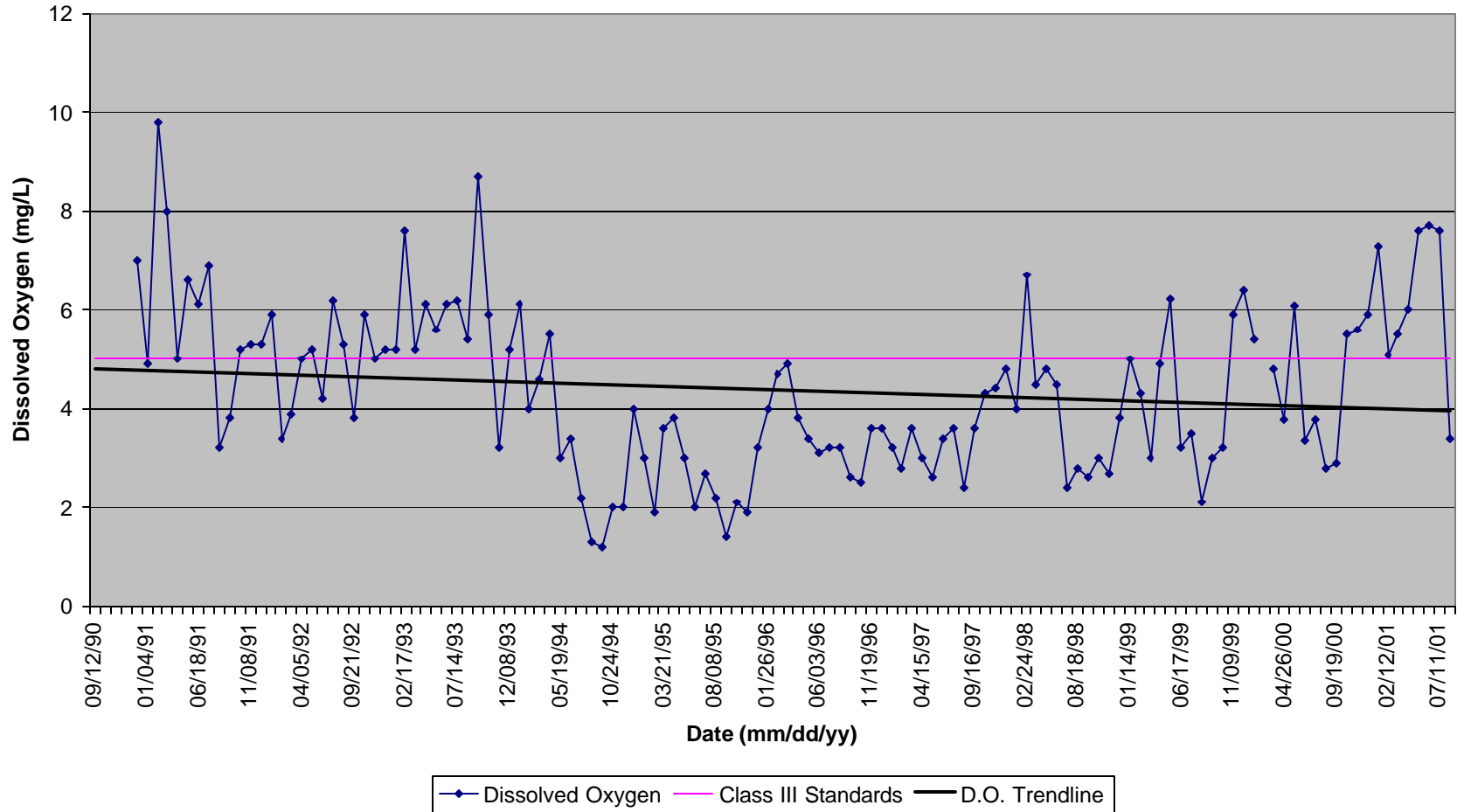
**Figure 7. Trendline of Concentration of Dissolved Oxygen as a Function of Time
(relative to Class III Freshwater Standards):
Ten Mile Canal at Colonial Bridge**



**Figure 8. Trendline of Concentration of Dissolved Oxygen as a Function of Time
(relative to Class III Freshwater Standards):
Ten Mile Canal at Daniels Weir**



**Figure 9. Trendline of Concentration of Dissolved Oxygen as a Function of Time
(relative to Class III Freshwater Standards):
Ten Mile Canal at Tamiami Weir**



**Figure 10. Concentration of Chlorophyll A as a Function of Time :
Ten Mile Canal at Colonial Bridge, Daniels Weir, and Tamiami Weir**

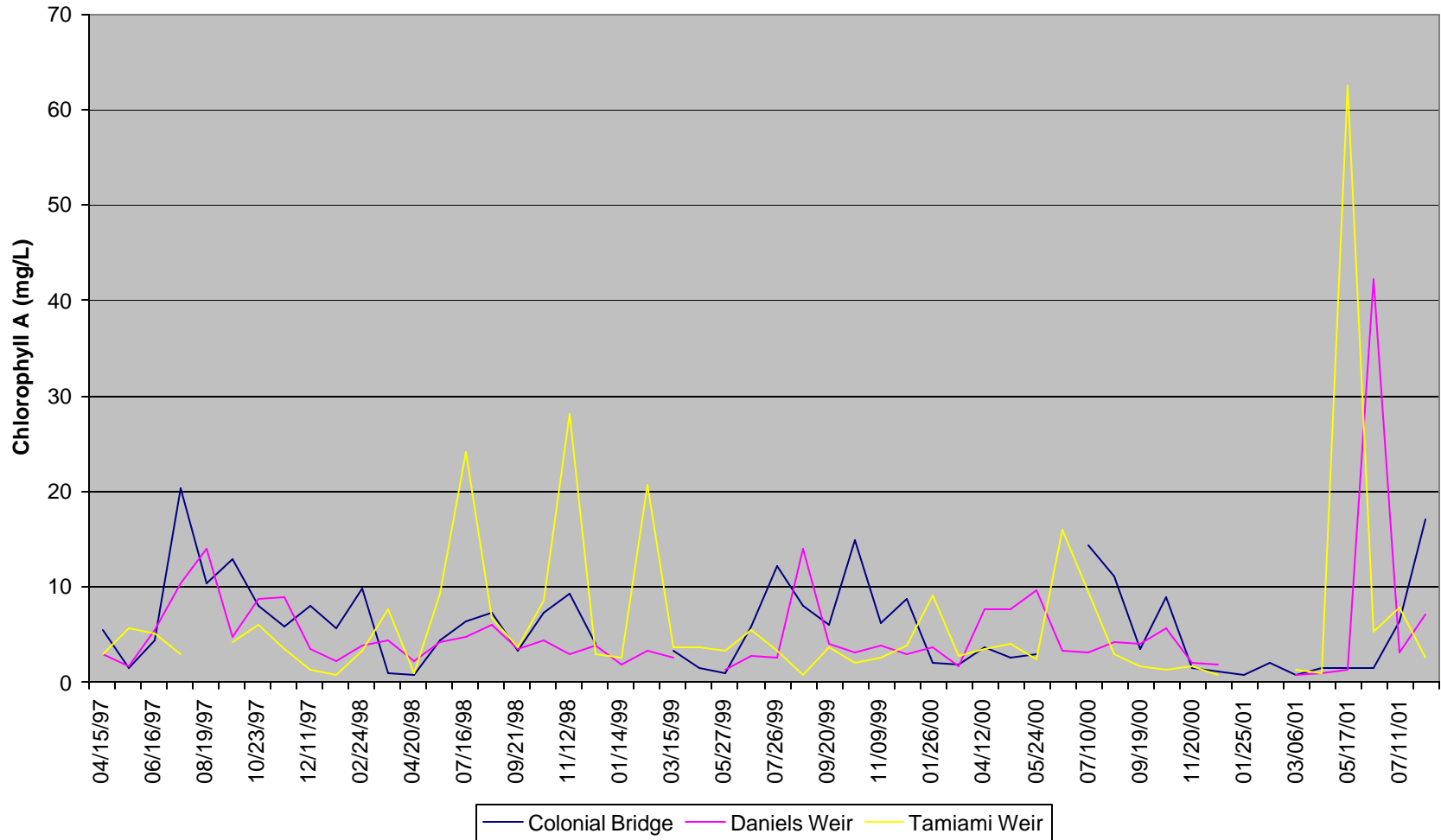


Figure 11. Trendline and Concentration of Biological Oxygen Demand as a Function of Time at Ten Mile Canal at Colonial Bridge, Daniels Weir, and Tamiami Weir

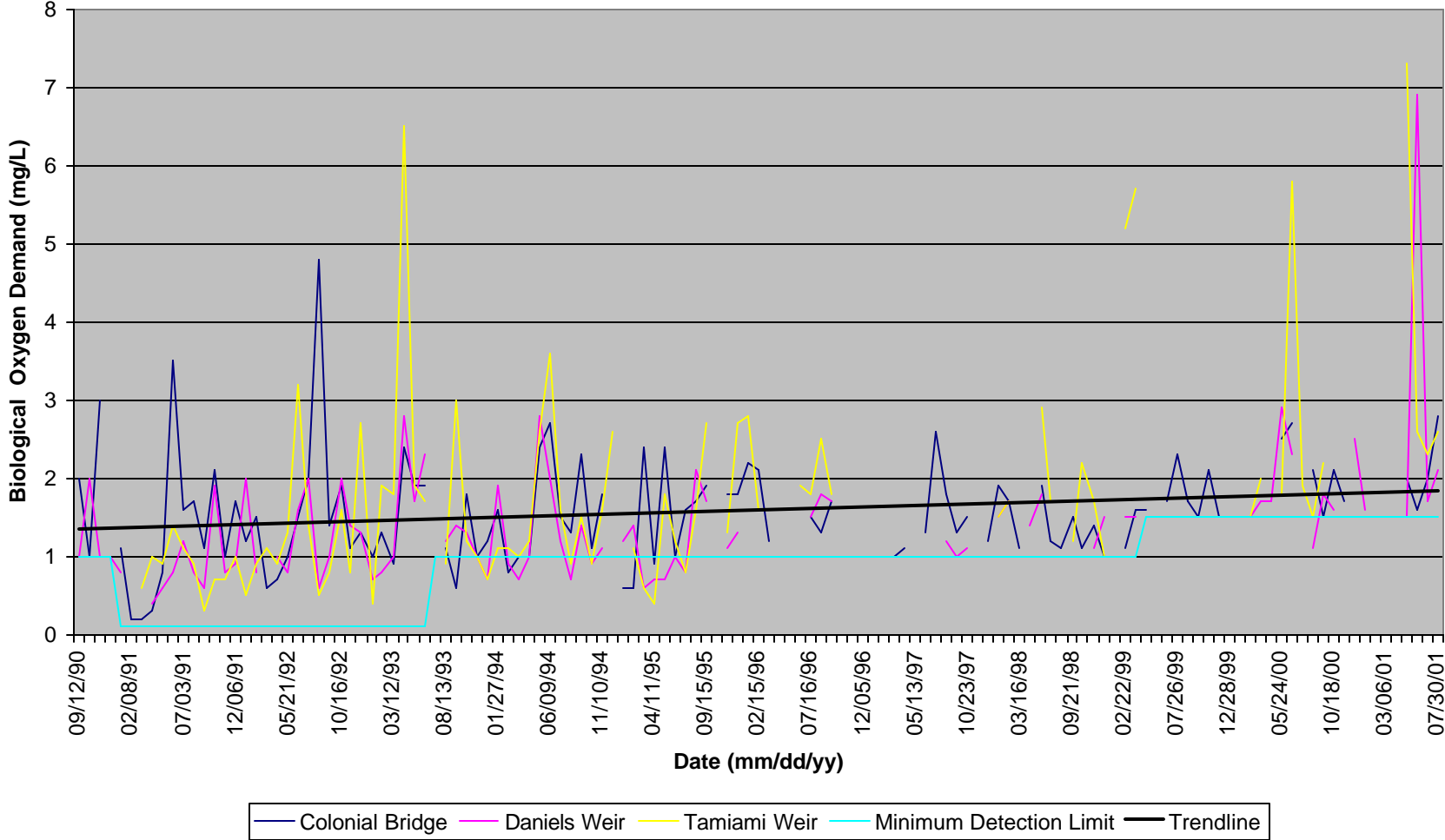
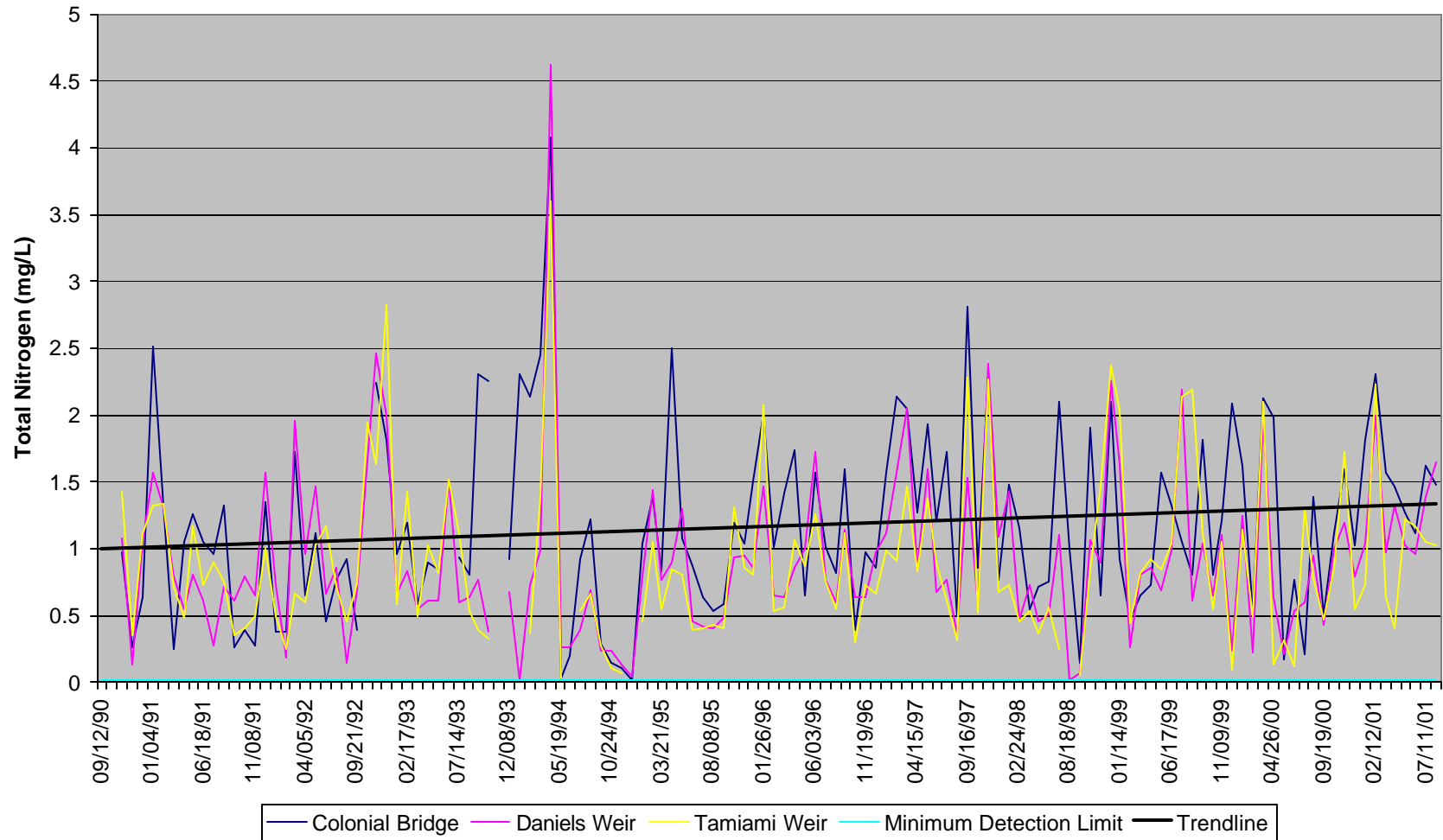
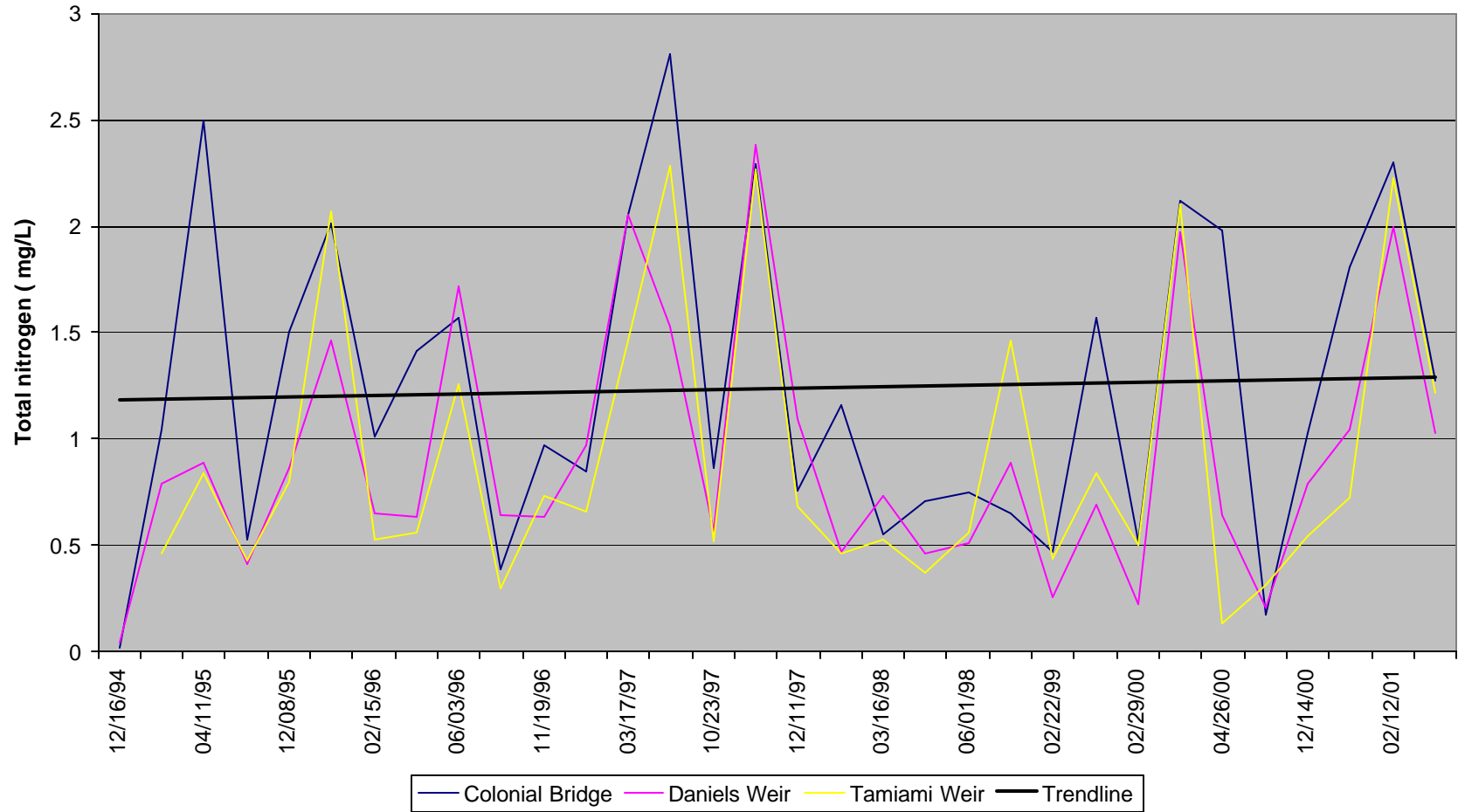


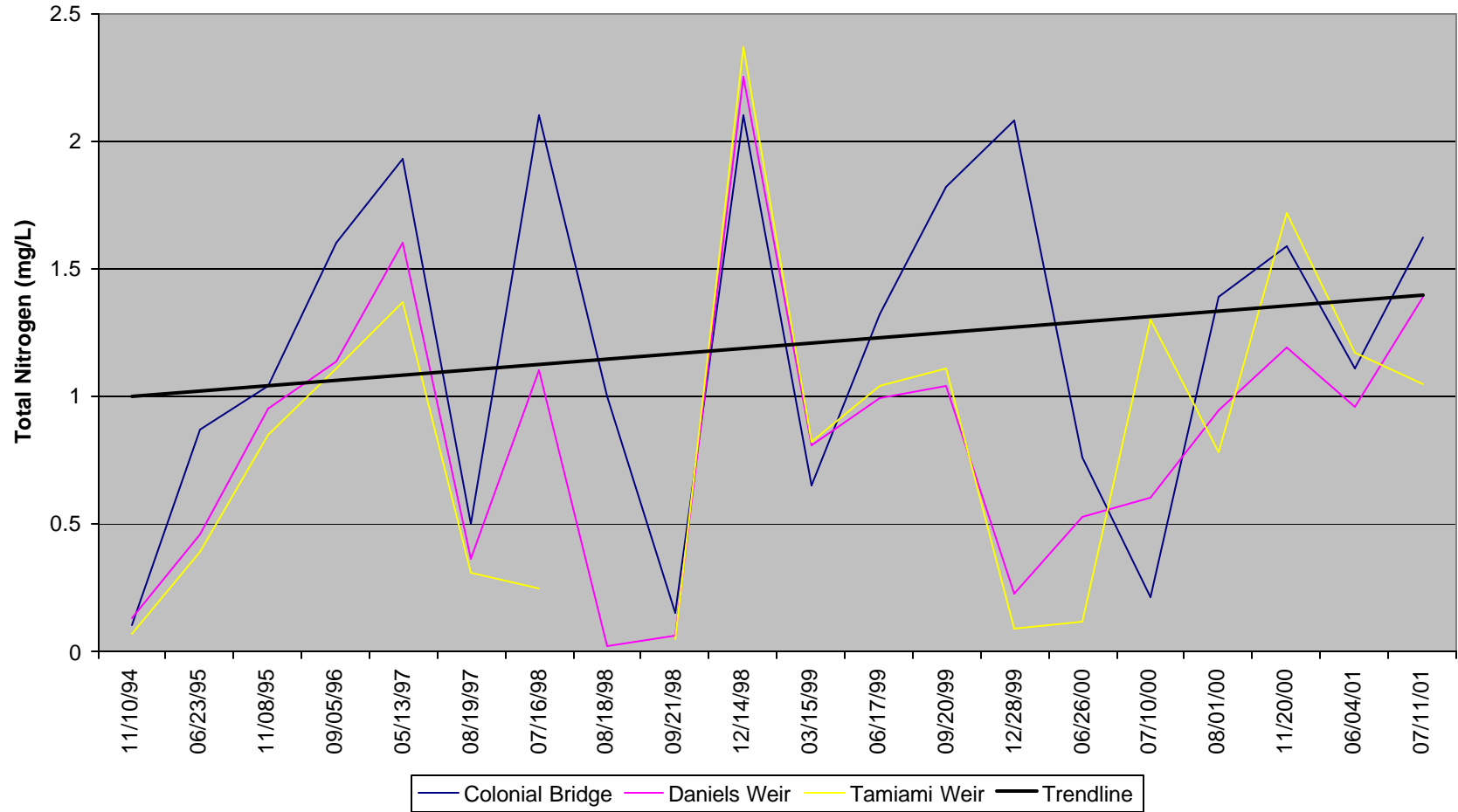
Figure 12. Trendline and Concentration of Total Nitrogen as a Function of Time:
Ten Mile Canal at Colonial Bridge, Daniels Weir, and Tamiami Weir



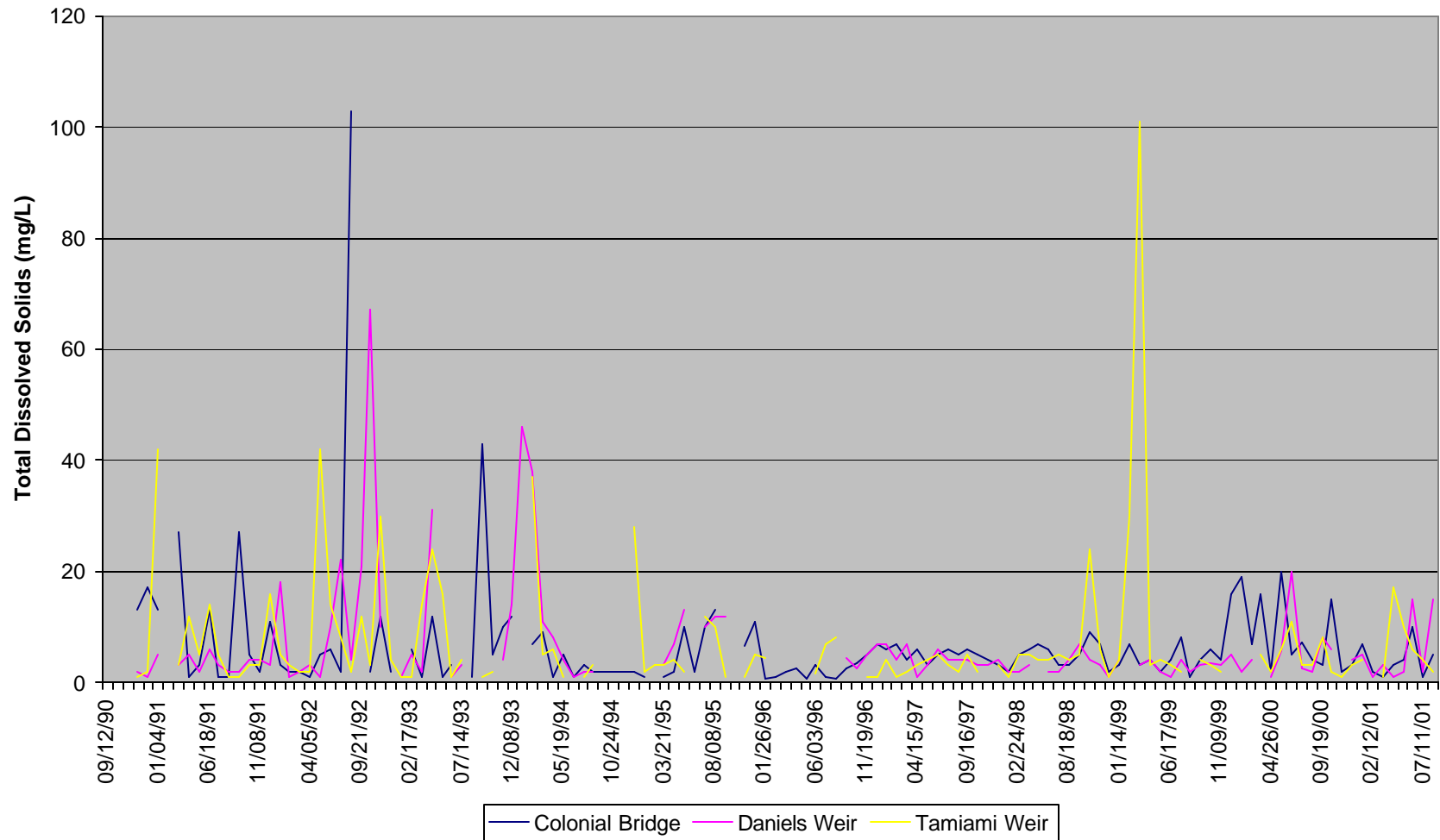
**Figure 13. Trendline and Concentrations of Total Nitrogen as a Function of Time during Base Flow Conditions:
Ten Mile Canal at Colonial Bridge, Daniels Weir, and Tamiami Weir**



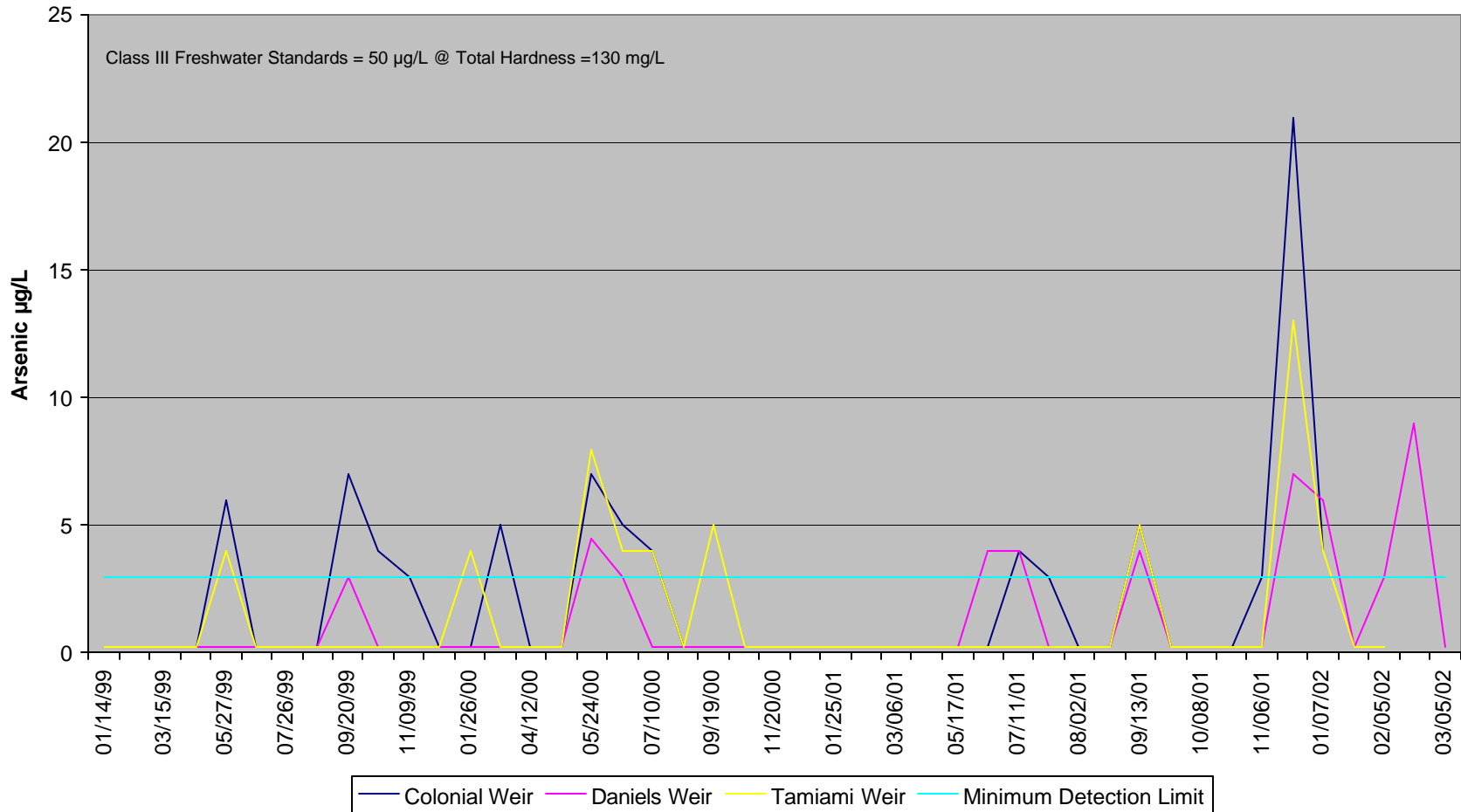
**Figure 14. Trendline and Concentration of Total Nitrogen as a Function of Time following Rainfall Events:
Ten Mile Canal at Colonial Bridge, Daniels Weir, and Tamiami Weir**



**Figure 15. Concentrations of Total Suspended Solids as a Function of Time:
Ten Mile Canal at Colonial Bridge, Daniels Weir, and Tamiami Weir**

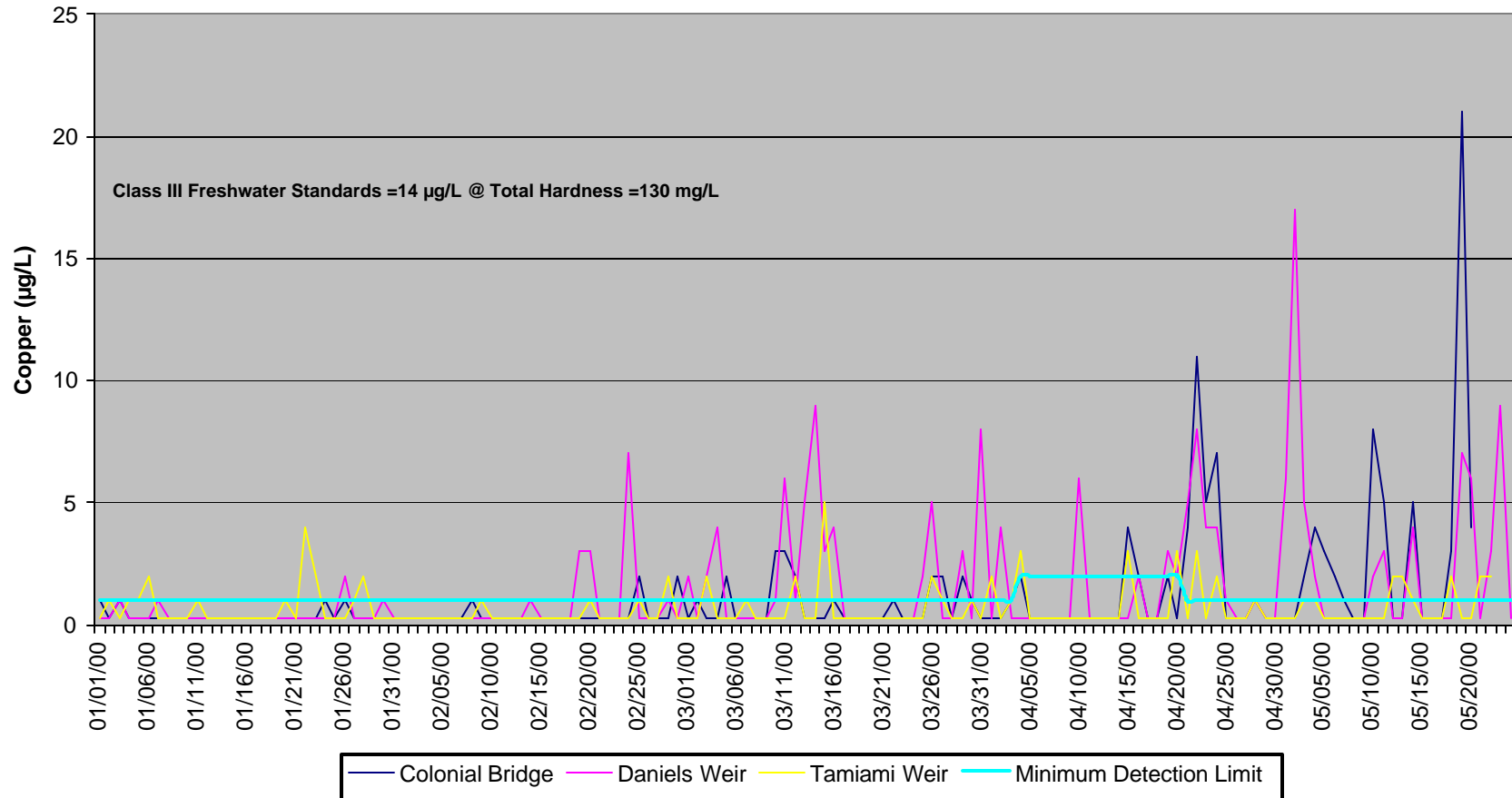


**Figure 16. Concentration of Arsenic as a Function of Time relative to Minimum Detection Limit:
 Ten Mile Canal at Colonial Bridge, Daniels Weir, and Tamiami Weir**



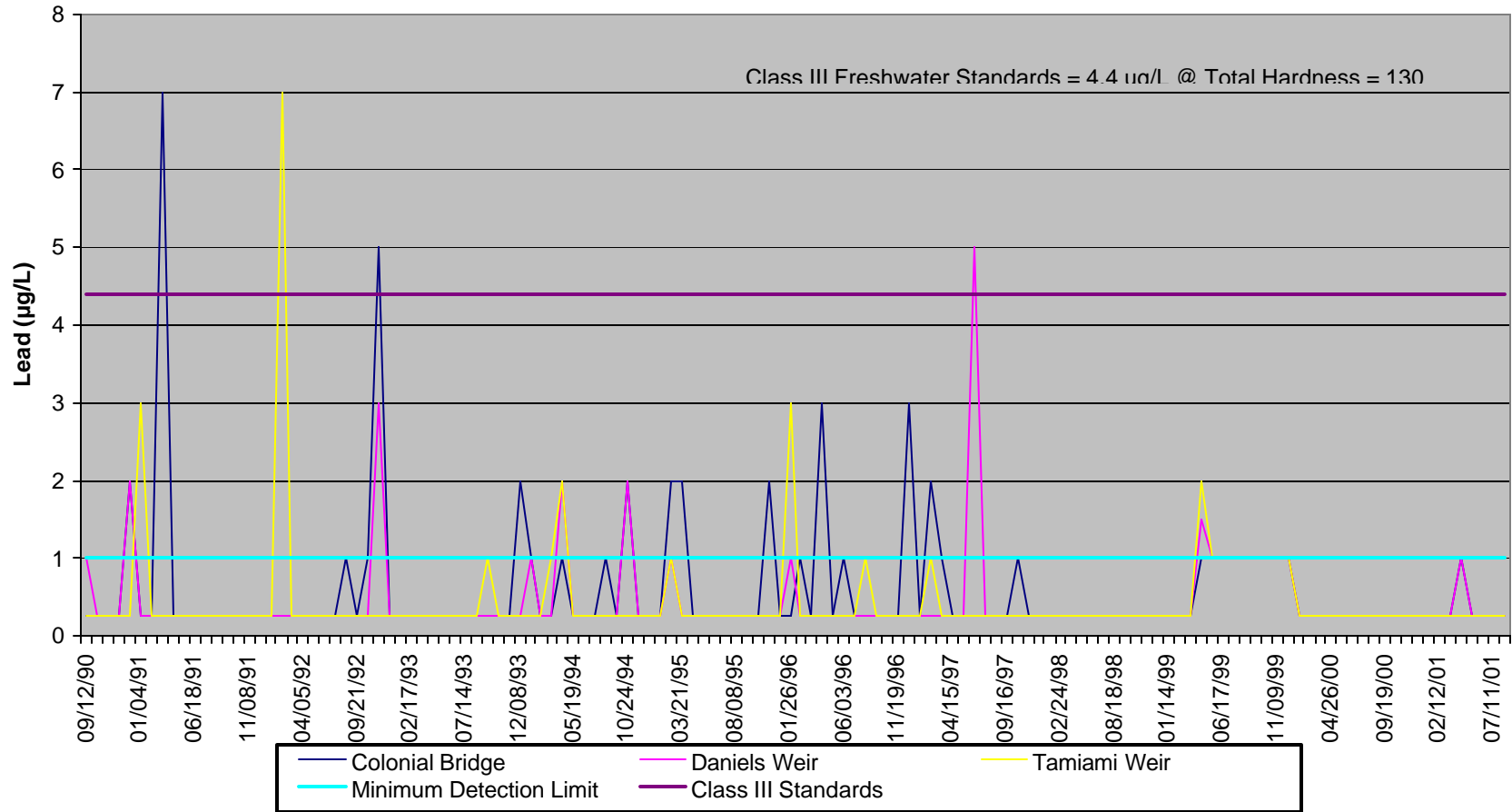
Note: For graphing purposes a value of 0.25 µg/L was assigned for values below Minimum Detection Limit.

**Figure 17. Concentration of Copper as a Function of Time relative to Minimum Detection Limit:
 Ten Mile Canal at Colonial Bridge, Daniels Weir, and Tamiami Weir**



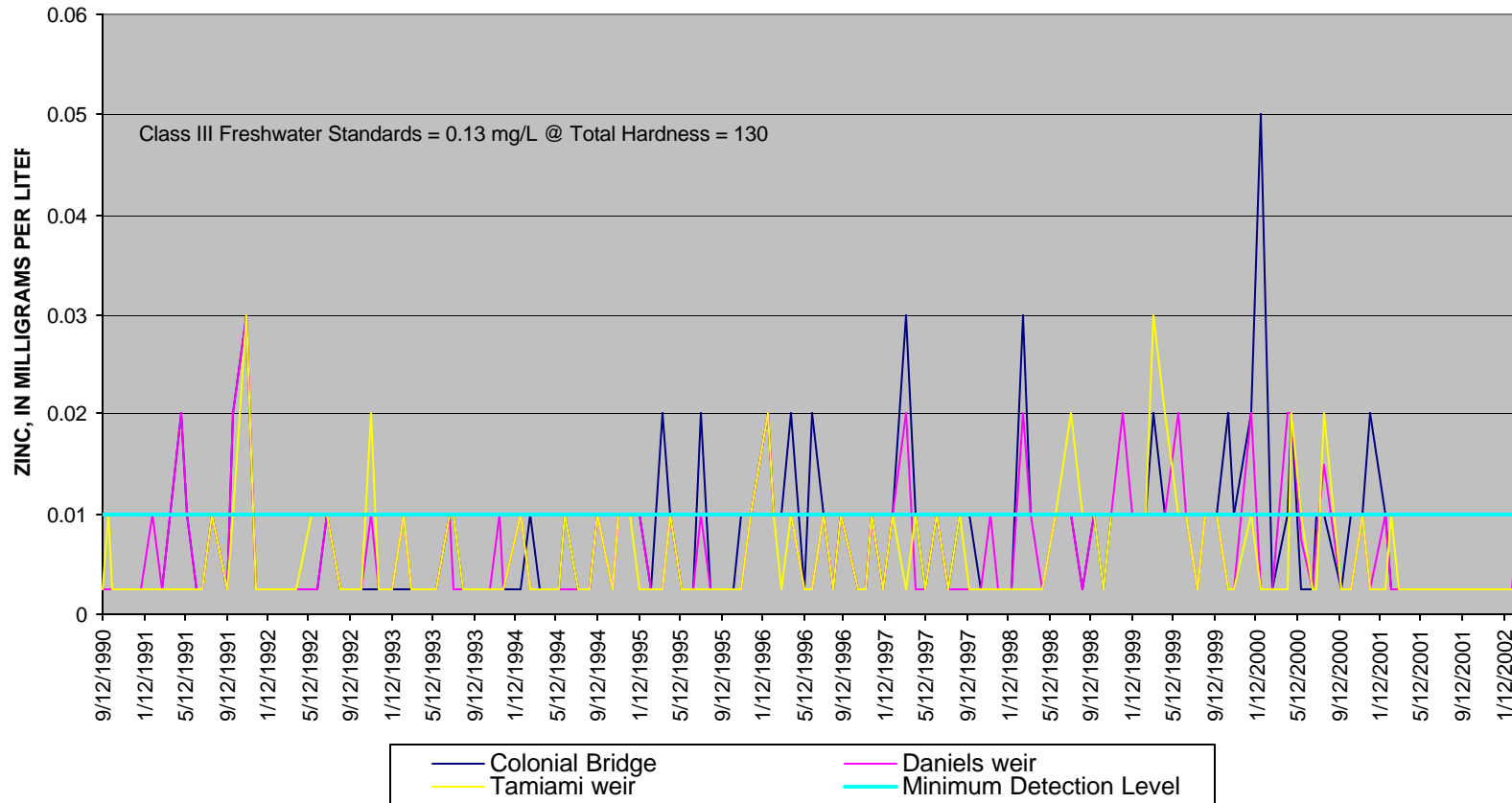
Note: For graphing purposes a value of 0.25 µg/L was assigned for values below Minimum Detection Limit.

**Figure 18. Concentration of Lead as a Function of Time relative to Minimum Detection Limit and Class III Freshwater Standards:
Ten Mile Canal at Colonial Bridge, Daniels Weir, and Tamiami Weir**



Note: For graphing purposes a value of 0.25 µg/L was assigned for values below Minimum Detection Limit.

Figure 19.--Concentration of zinc as a function of time relative to minimum detection level at Ten Mile Canal at Colonial bridge, Daniels weir, and Tamiami weir.



Note: For graphing purposes a value of 0.0025 mg/L was assigned for values below Minimum Detection Level.

Figure 20. Chloride Anomalies Suspected to be from Fort Myers Well Field Discharges to Ten Mile Canal Drainage Basin

